



**ALASKA DIVISION OF HOMELAND SECURITY &
EMERGENCY MANAGEMENT**



SITUATION REPORT 21-341 • DECEMBER 07, 2021

Toll-Free 1.800.478.2337

Anchorage Area 907.428.7000

SEOC 907.428.7100

<p><u>SEOC Preparedness Level</u> Level 1 – Normal Operations</p>	<p>http://ready.alaska.gov</p>	<p><u>National Terrorism Advisory System:</u> Read the updated NTAS Bulletin here</p>
<p><u>Maritime Security (MARSEC)</u> Level:1-Minimum Appropriate Security Measures</p>	<p>WHO Novel Coronavirus Pandemic (COVID-19): 2019 Novel Coronavirus</p>	<p><u>Alaska Military Installation Force Protection Level:</u> FPCON Bravo</p>

(Significant changes from previous situation reports are in red.)

Significant Issues:

None

Threat Level Changes:

None

State of Alaska Department of Health and Social Services (DHSS)

DHSS is now leading the State of Alaska COVID-19 Recovery through Department Operations, supported by SEOC and other state departments as required.

For current COVID-19 information, see:

<https://covid19.alaska.gov/>

<https://www.cdc.gov/coronavirus/2019-ncov/index.html>

NTAS BULLETIN

To read current or expired advisories, click the link below:

<https://www.dhs.gov/national-terrorism-advisory-system>

Travel Alerts and Conditions

For current driving conditions dial 511 or link to <http://511.alaska.gov/>

Barry Arm Landslide / Tsunami Risk

For the latest information on the Barry Arm Landslide and Tsunami risk, click here:

[DGGs Barry Arm Landslide and Tsunami Hazard](#)

Recent Earthquakes

USGS Earthquake Information: <http://earthquake.usgs.gov/>

National Tsunami Warning Center: <http://tsunami.gov/>

Alaska Volcanoes

Great Sitkin Alert Level: **Watch** and Aviation Color Code: **Orange**

Pavlof Alert Level: **Watch** and Aviation Color Code: **Orange**

Semisopchnoi Alert Level: **Watch** and Aviation Color Code: **Orange**

For Alaska Volcano updates, go to: <https://www.avo.alaska.edu/>

Air Quality Index (AQI) Advisories

For the most up to date Air Quality Index Advisories:

<http://dec.alaska.gov/Applications/Air/airtoolsweb/Home/Index>

Spills of Oil and Hazardous Substances

The ADEC Spill Prevention and Response page is located at:

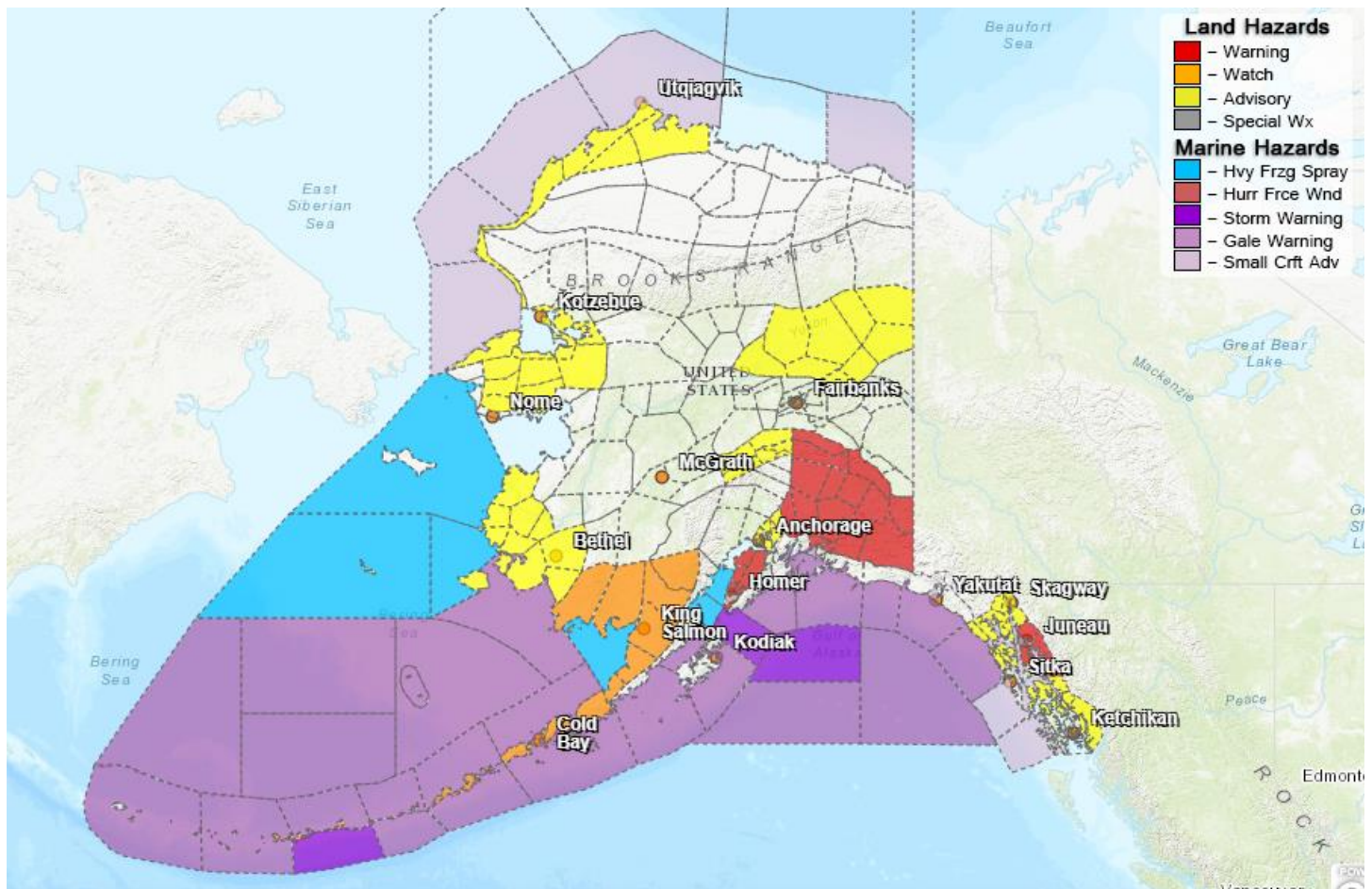
<http://dec.alaska.gov/spar/ppr/spill-information/response/>

Alaska Cyber Security Information

State Employees may sign up for cyber security notifications and alerts at

<https://oit.alaska.gov/security>

Significant Weather:



Blizzard Warnings are in effect for the following areas:

- Copper River Basin from Paxson north until 5:00 A.M. tomorrow.
- Pribilof Islands from 9:00 P.M. Wednesday until 9:00 A.M. Thursday.

Winter Storm Warnings are in effect for the following areas:

- Juneau until 9:00 A.M. today.
- Western Kenai Peninsula until 10:00 A.M. today.
- Northeast Prince William Sound until 6:00 P.M. today.
- Eastern Alaska Range until 6:00 A.M. tomorrow.
- Bristol Bay beginning tomorrow night through Thursday night.

Winter Weather Advisories are in effect for the following areas:

- Anchorage until 1:00 P.M. today.
- Matanuska Valley until 3:00 P.M. today.
- Denali, and the Yukon Flats from noon today until 6:00 A.M. tomorrow.
- Western Arctic Coast until midnight tomorrow.
- Elfin Cove, Gustavus, Haines, Hoonah, Skagway Pelican and Tenakee Springs until 9:00 A.M. today.
- Petersburg, Wrangell and Prince of Wales Island until noon today.
- Hyder until midnight tonight.
- Yukon Delta from 7:00 P.M. today until 7:00 P.M. tomorrow.
- Kuskokwim Delta until noon tomorrow.

Coastal Flood Advisories remain in effect for the northern Seward Peninsula, Baldwin Peninsula and the Chukchi Sea coast until 11:00 A.M. today. Water levels up to 5 feet above the normal high tide line are possible.

High Surf Advisories are in effect until 11:00 A.M. tomorrow for the northern and western Arctic Coastal area.

A High Wind Watch is in effect for the Central and Eastern Aleutians as well as the Alaska Peninsula from Wednesday morning until Thursday afternoon.

For more information and the most current weather, Watches / Warnings / Advisories go to:
<http://www.weather.gov/arh>

Avalanche Forecast:



There are areas near Cordova with high risk, Valdez and along the Richardson Highway with considerable risk and near Chilkat Lake and Haines with moderate risk.

Check the Avalanche Forecast Center closest to your area for the most up to date information on avalanche potential. <https://alaskasnow.org> or <https://www.weather.gov/afc/avalancheweather>

The Next Situation Report: will be 08 December 2021. A significant change in the situation or the threat level will prompt an interim report.

This report is posted on the internet at <https://ready.alaska.gov/sitrep>. To register for email distribution, go to <http://list.state.ak.us/mailman/listinfo/dhsem.situation.report>. Direct questions regarding this report to the SEOC at 907-428-7100 or seoc@alaska.gov